

ARRL FIELD DAY



11AM Saturday June 28th

through

11AM Sunday June 29th



What is Field Day?



- It's a nationwide event
- It's about public service but not exclusively
- It's about getting on the air
- It's ****not**** a contest, but ***we keep score***
- It's an opportunity to come together as a club, operate together, flex our capabilities, learn, and have fun

What is Field Day?



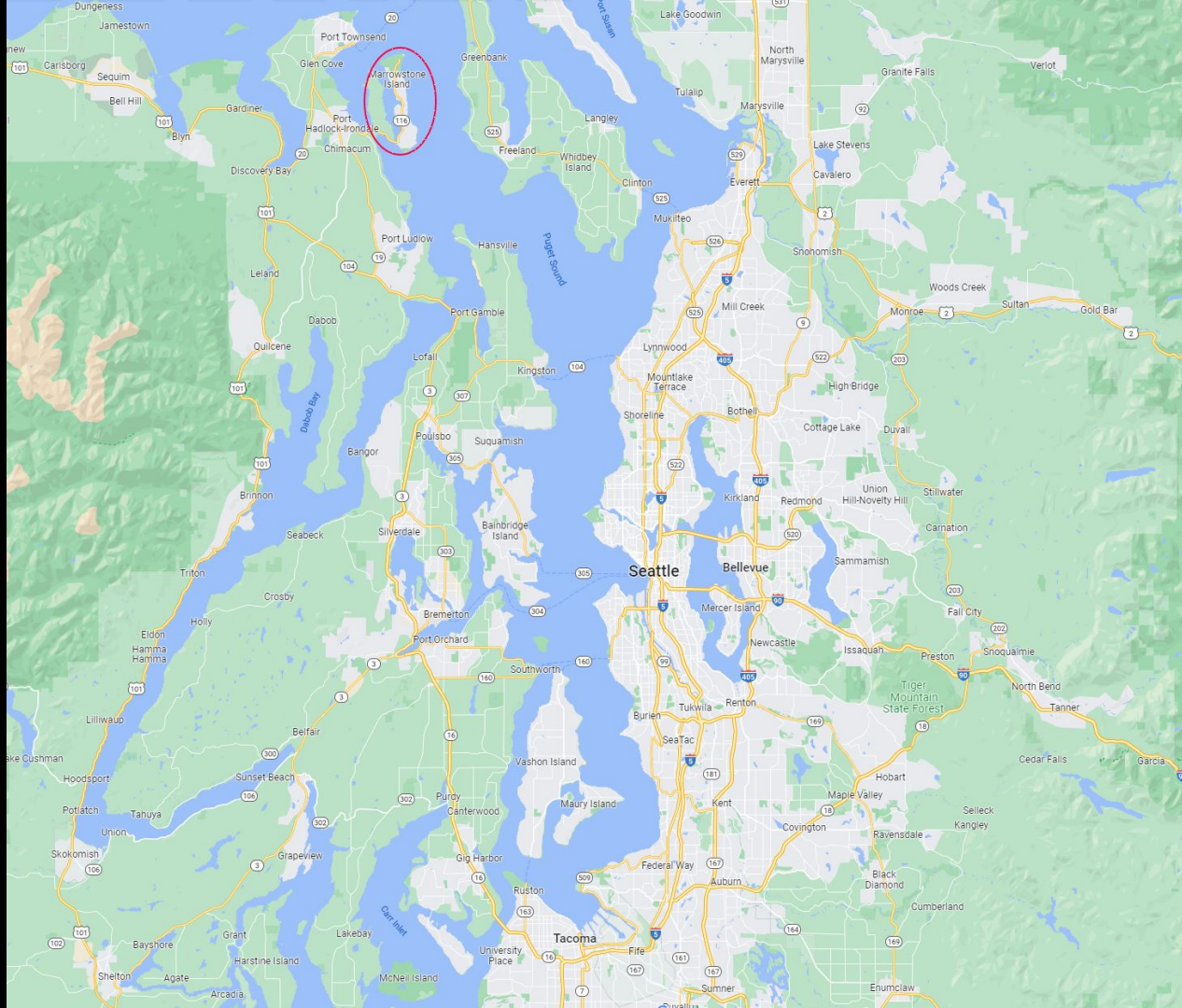
The goal: To work as many stations as possible on the 160, 80, 40, 20, 15 and 10 Meter HF bands, as well as all bands 50 MHz and above, and in doing so to learn to operate in abnormal situations in less than optimal conditions. A premium is placed on developing skills to meet the challenges of emergency preparedness as well as to acquaint the general public with the capabilities of amateur radio.

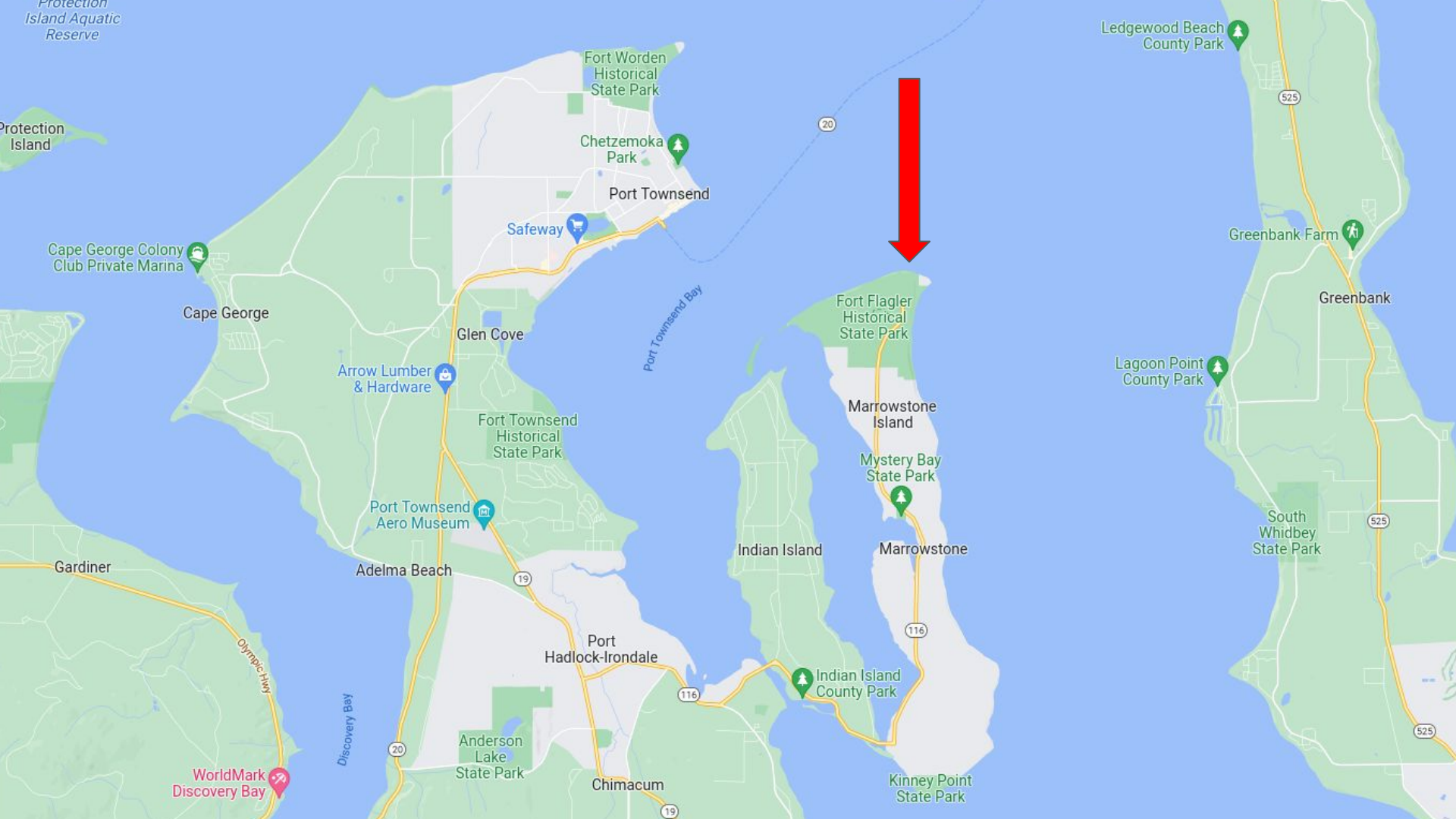
FORT FLAGLER
STATE PARK

WELCOME

ACQUIRED FROM THE FEDERAL GOVERNMENT
FOR PUBLIC USE



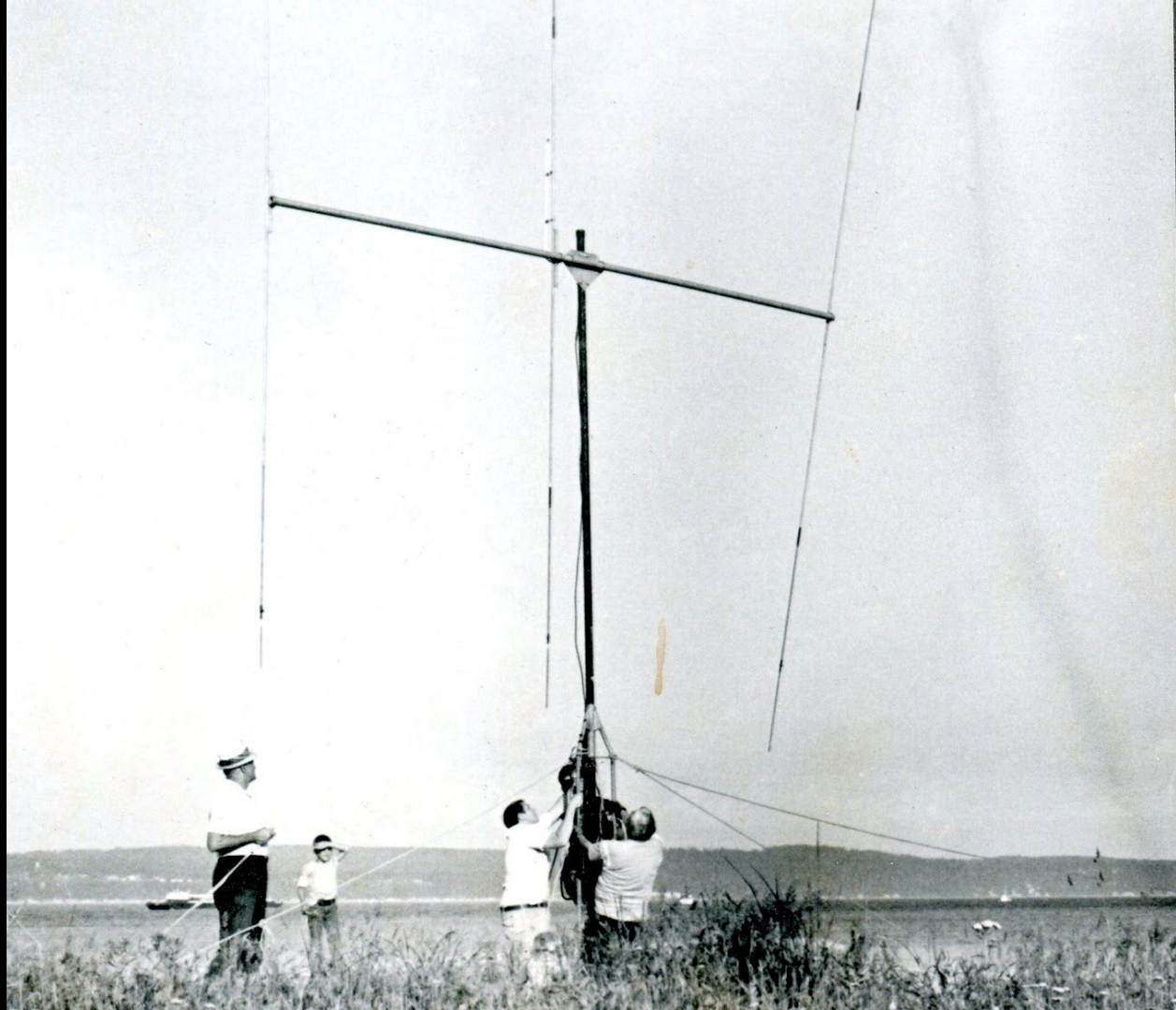






















1. Searchlights
2. Battery Bankhead
3. Battery Calwell
4. Battery Downes
5. Battery Revere
6. Battery Wilhelm
7. Battery Rawlins
8. Battery Grattan
9. Battery Lee
10. Vacation housing
11. Museum
12. Battery Wansboro











Planning Your Trip



Day Trip to the Park

Group Camping (Wagon Wheel)

Other Camping at the Park

Your own accommodations





All park rules must be followed at all times:

<https://www.parks.wa.gov/179/Rules-regulations>







Group Camping (G1 Wagon Wheel)

Contact our WagonMaster

Sheila Holtan KE7OPI

xsmokernow@gmail.com

Put 'Wagonwheel 25' in your
email subject



\$10 / night

Payment
preferred via
Zelle by sending
your money to:
**treasurer@
mikeandkey.org**



Group Camping Starts

Tuesday June 24th

~2PM

June 2025						
S	M	T	W	T	F	S
1	2	3	4	5	6	7
8	9	10	11	12	13	14
15	16	17	18	19	20	21
22	23	24	25	26	27	28
29	30					









**Setup starts @
10AM**

Friday June 27th

**Kick off on the Bluff
& CW Beach**

June 2025						
S	M	T	W	T	F	S
1	2	3	4	5	6	7
8	9	10	11	12	13	14
15	16	17	18	19	20	21
22	23	24	25	26	27	28
29	30					





Capitol Youth Chorale
Summer camp

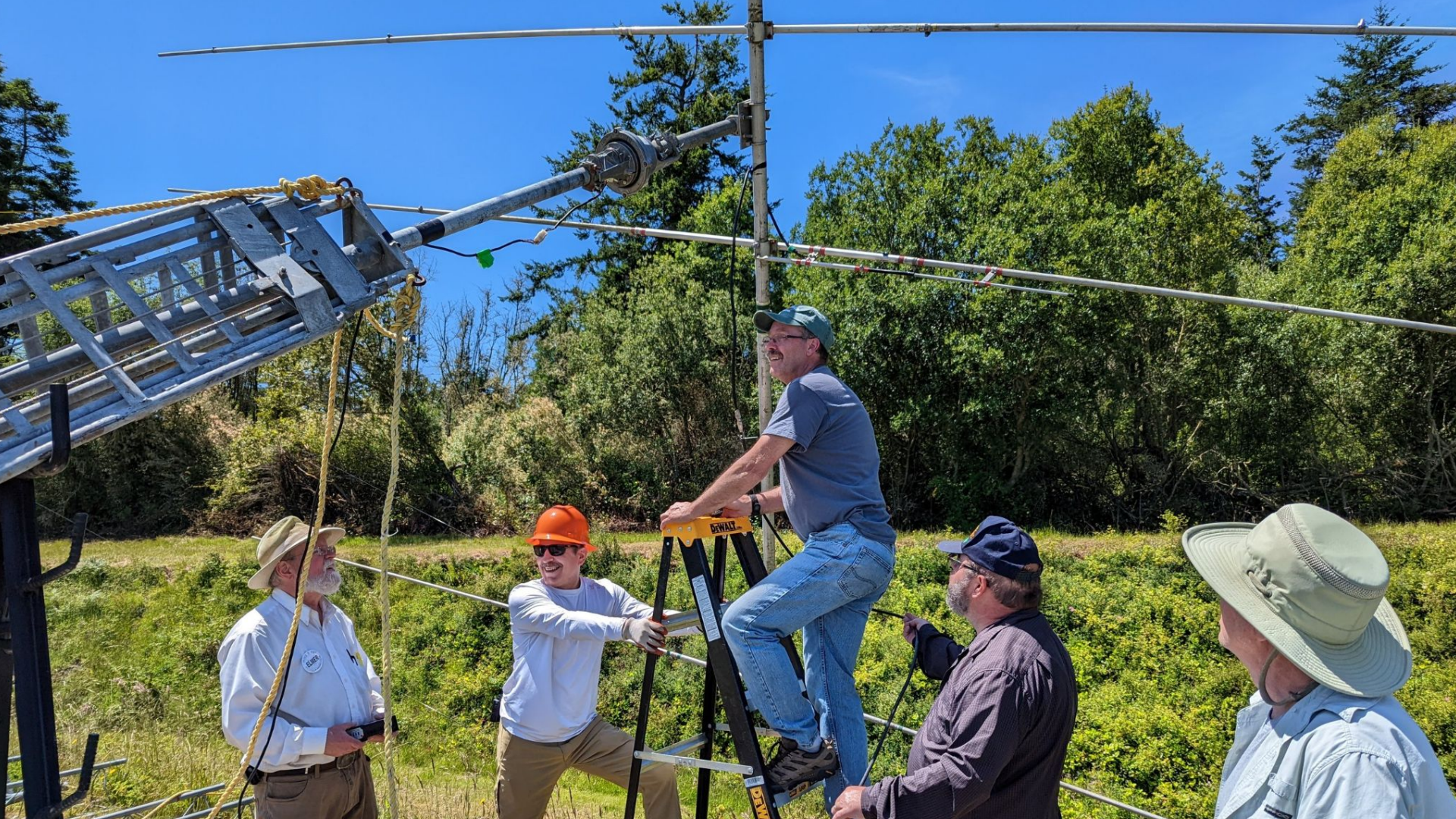
Google













Potluck at ~6PM
Friday June 27th
At the Wagon Wheel
Campground

June 2025						
S	M	T	W	T	F	S
1	2	3	4	5	6	7
8	9	10	11	12	13	14
15	16	17	18	19	20	21
22	23	24	25	26	27	28
29	30					





Field Day Starts @
11AM
Saturday June 28th

June 2025						
S	M	T	W	T	F	S
1	2	3	4	5	6	7
8	9	10	11	12	13	14
15	16	17	18	19	20	21
22	23	24	25	26	27	28
29	30					

**OPEN
TO
PUBLIC**

**SEE THE EXCITEMENT OF
HAM RADIO**

K7LED ---MIKE & KEY AMATEUR RADIO CLUB

**This is "FIELD DAY" the largest
single emergency preparedness
exercise in the country.**

**Amateur radio " OPEN HOUSE"
GET - ON - THE - AIR STATION**

Welcome non-licenced persons









THE GOAL IS TO MAKE
SUCCESSIONAL CONTACTS AT POSSIBLE
EXCHANGES INFORMATION

CALL SIGN
LOCATION
CLASS OF STATION
Your call sign: K2C
Your location: W80
Your station ID: 44

Give these signals and then get back
into the computer
More on to the table

RECEIVED
WALTONHAM
WALTONHAM
WALTONHAM

CALL
RECEIVED
WALTONHAM
WALTONHAM
WALTONHAM











Field Day: on the 4th full weekend in June amateur radio operators all over the U.S. and Canada (and other parts of the world as well), take their equipment into the great outdoors to operate away from the power mains. The idea is to practice setting up and operating under emergency conditions. Participants set up efficient temporary stations and contact as many other Field Day participants as possible. It is estimated there will be more than 100,000 participants nation wide.

CW (Morse code) - is the oldest mode of ham radio communications in use today. It consists of a plain, unmodulated signal which is transmitted by the closure of a manual key or an electronic keyer circuit. Today computers are used for this.

Here at "CW Beach" the CW operators of the M...

You send them...

your callsign

your class,

your ARRL section

They send you...

their callsign

their class,

their ARRL section

K7LED 6A WWA

Or

Kilo Seven Lima Echo Delta

Six Alpha

Whiskey Whiskey Alpha

Rule Changes for 2025

- Eligibility Criteria for the GOTA station for class A and F station has changed (see 4.1.1)
- Does not impact our Field Day plans

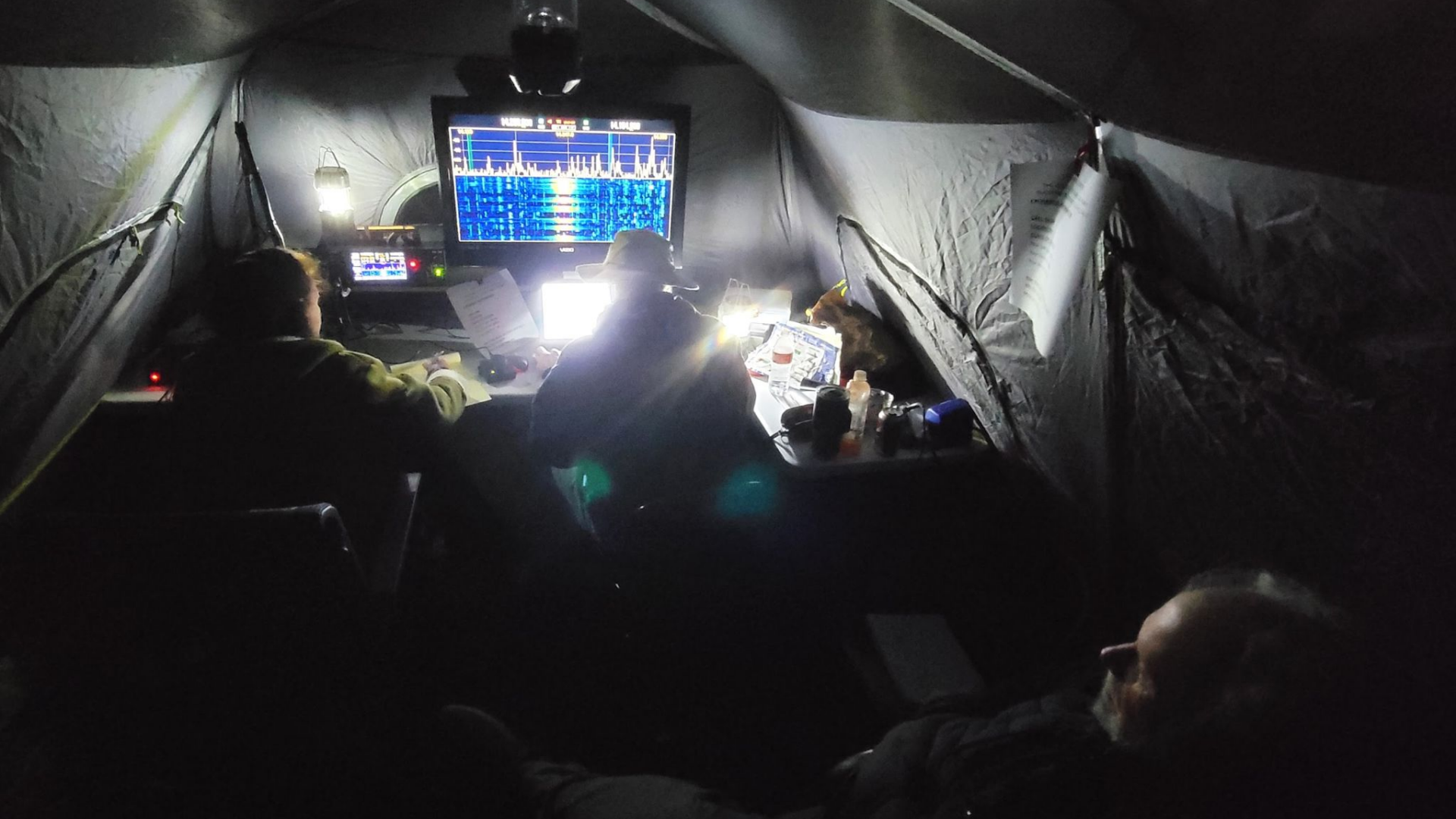
Bonus Points

- Emergency Power
- Media Publicity
- Public Location
- Public Information Table
- Message to the Section Manager
- Message Handling
- Satellite QSO
- Alternate Power
- Educational Activity
- Visit by an Elected Official
- Visit by a Served Agency
- GOTA
- Web Submission
- Youth Participation
- Social Media
- Safety Officer

GOTA Coaches

Email

george.ae7g@gmail.com



**Field Day Ends @
11AM
Sunday June 29th**

June 2025						
S	M	T	W	T	F	S
1	2	3	4	5	6	7
8	9	10	11	12	13	14
15	16	17	18	19	20	21
22	23	24	25	26	27	28
29	30					

Teardown Ends @

~3PM

Sunday June 29th

June 2025						
S	M	T	W	T	F	S
1	2	3	4	5	6	7
8	9	10	11	12	13	14
15	16	17	18	19	20	21
22	23	24	25	26	27	28
29	30					

Group Camping

Ends @ Noon

Monday June 30th

June 2025						
S	M	T	W	T	F	S
1	2	3	4	5	6	7
8	9	10	11	12	13	14
15	16	17	18	19	20	21
22	23	24	25	26	27	28
29	30					



Local Simplex Frequency
146.58

Weather



Average High 75F

Average Low 52F

Historical Weather



2024 - Hi 66 / Low 55- A light rain in the AM

2023 - Hi 65 / Low 50 - No Rain

2022 - Hi 80 / Low 49 - No Rain

2021 - Hi 95 / Low 59 - No Rain

2020 - Hi 63 / Low 52 - Rain 0.03 inches over night

2019 - Hi 64 / Low 51 - No Rain

2018 - Hi 65 / Low 52 - No Rain

2017 - Hi 84 / Low 51 - No Rain

2016 - Hi 67 / Low 51 - No Rain



Tuesday June 24th - Group Camping begins

Friday June 27th - Setup @ 10AM, Potluck at ~6PM

Saturday June 28th - Field Day starts at 11AM

**Sunday June 29th - Field Day ends at 11AM,
teardown begins and is complete by about 3PM**

Monday June 30th - Group camping ends at noon

Can't Join Us?



Class D stations may work all other Field Day stations, including other Class D stations, for points

Field Day rule 4.6 defines Class D stations as “Home stations,” including stations operating from permanent or licensed station locations using commercial power.

Power output for classes A, B and C cannot exceed 500 watts Peak Envelope Power (PEP) transmitter output. Power output for classes D, E and F cannot exceed 100 watts Peak Envelope Power (PEP) transmitter output.

Can't Join Us?



In addition, an aggregate club score will be published, which will be the sum of all individual entries indicating a specific club (similar to the aggregate score totals used in ARRL affiliated club competitions).

Report your score using the club name...

Mike & Key ARC

Critical Needs

**wa7dy@
arri.net**

FD  25

Questions?

FD  25

fieldday@mikeandkey.org

Join the email list

<https://mkarc.groups.io/g/fieldday/>

